

# NTU Innovation and Entrepreneurship

Issue 3 | April 2026

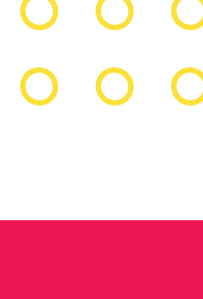


Leading Lines

## Nurturing impact at scale

NTU President Ho Teck Hua on balancing basic science and entrepreneurship, and why translating ideas into real-world solutions requires patience, persistence, and the right ecosystem.

[Read more](#)



The Download

## Good science isn't enough: the case for designing translation from day one

Professor Lim Kah Leong points to IP discipline, repeatable processes and partnerships built before the science is ready, and not after.

[Read more](#)



Field Notes

## Built to scale: From lab breakthrough to global power player

Amperesand, a deep-tech spin-off from NTU, is rewriting what power infrastructure can do for the world's AI data centres.

[Read more](#)



Decoded

## Technologies shaping tomorrow's industries

A glimpse into various technologies developed at NTU that address challenges spanning sustainability, energy, communications and healthcare, open to industry collaboration, licensing and investment partnerships.

[Read more](#)



Behind the Brilliance

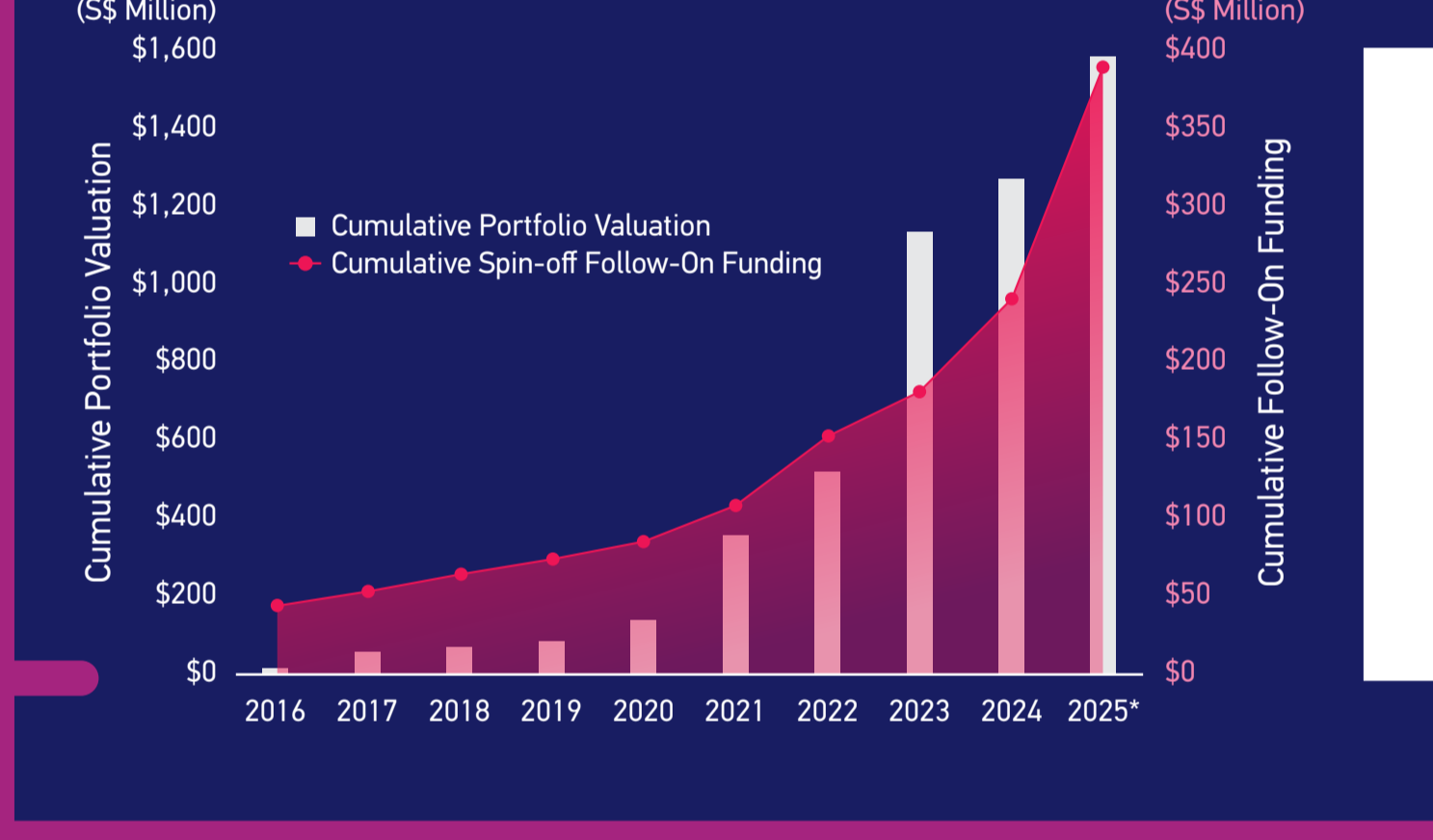
## Ideas to impact: NTUpreneur's GET Innovation Grant backs student ventures

The Growing Entrepreneurial Talents (GET) Innovation Grant supports NTU students in transforming early ideas into testable ventures, providing seed funding and mentorship to build first prototypes.

[Read more](#)

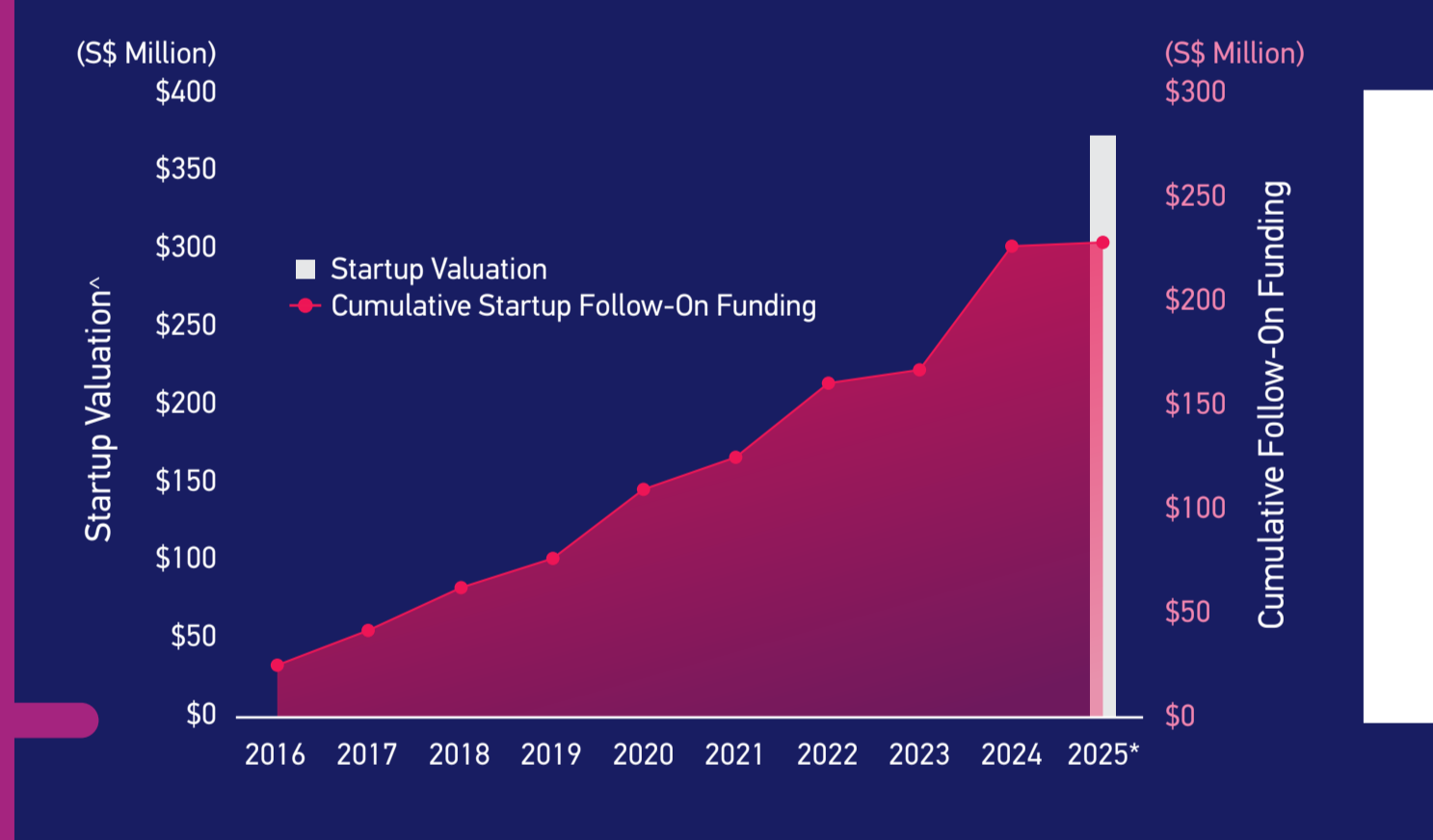
## I&E Quarterly Pulse

Latest data as of 31 December 2025\*



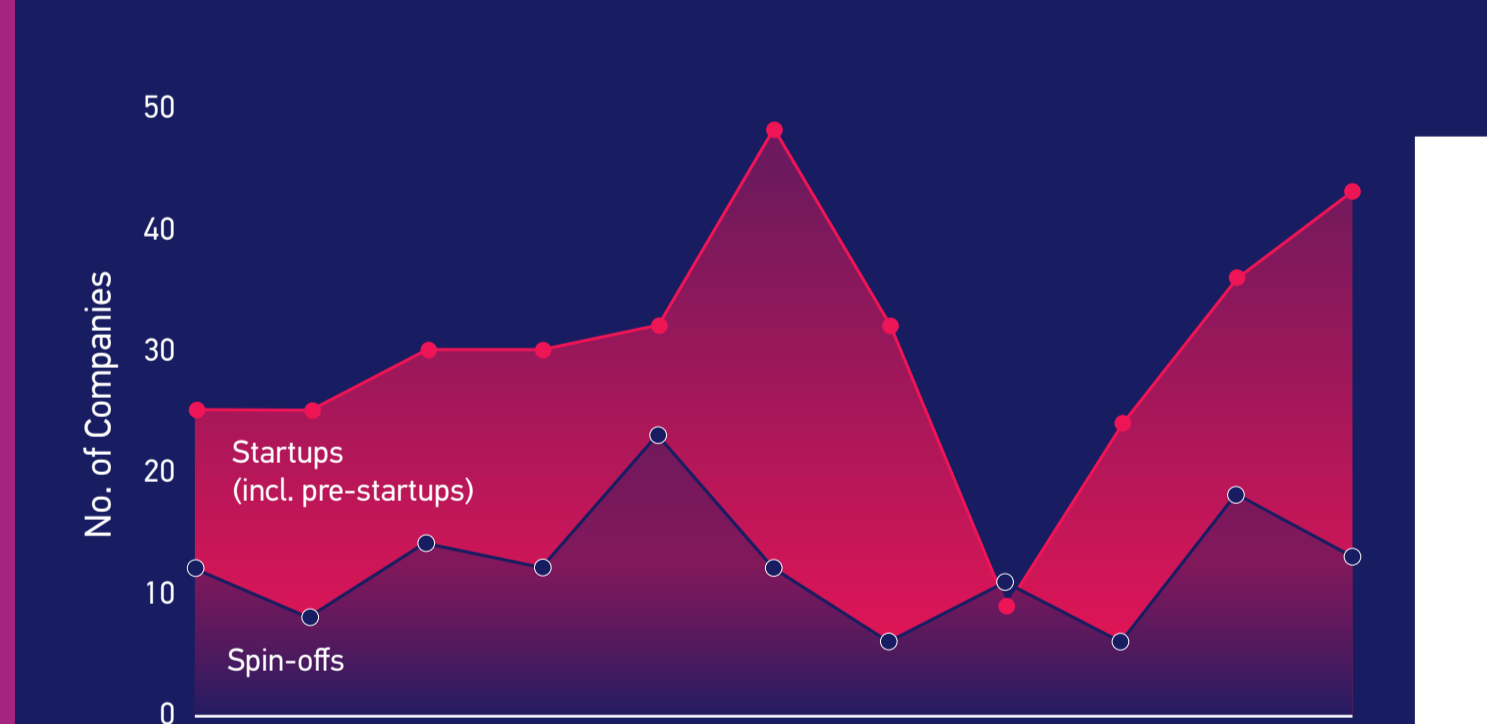
**~ S\$1.6B**  
Cumulative Portfolio Valuation

Data as of 31 March of each year



**> S\$370M**  
Startup Portfolio Valuation

\* Data retrieved from Pitchbook (January 2026)




Over the past decade:  
**> 330** Startups (incl. pre-startups)  
**> 130** Spin-offs

Startup: Early-stage company with at least one NTU-affiliated founder.  
Pre-startup: Team in early stage of commercialisation/not yet fully incorporated, supported by NTU funding or incubation programmes.  
Spin-off: Company formed on the back of an NTU-owned IP/technology.


## NTU Seed Fund

The NTU Seed Fund helps high-potential NTU spin-offs and startups scale by providing early-stage capital and co-investment support, fuelling their journey from lab to market.

Congratulations to the following ventures who have been awarded the NTU Seed Fund in the first quarter of 2026.



**ArcVance Pte Ltd**  
Advanced blood processing platform to empower sensitive cancer detection.



**Ink An Epic Pte Ltd**  
Turning stories into stunning graphic novels effortlessly with a perfect blend of AI speed and human artistry.

## What's On at NTU I&E

### MakanNight Talk, 23 April 2026

Turn your research into real-world impact with the right IP strategy from the start. Unpack key considerations across the commercialisation journey and hear from Mr Koh Boon Hwee, Chairman of Altara Ventures, in a fireside chat on building successful ventures.

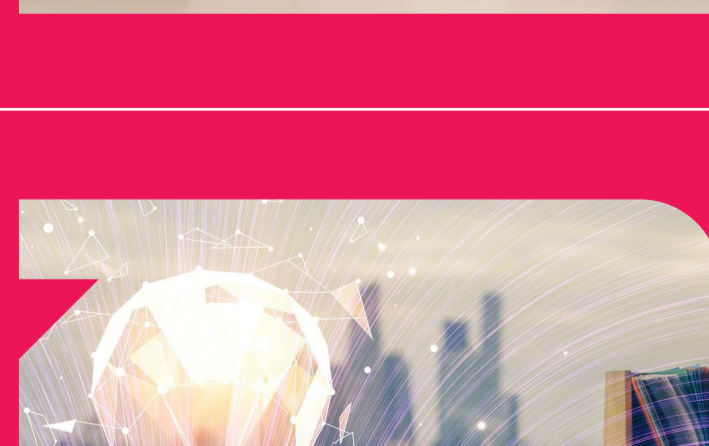
[Register here](#)



### NTU Seed Fund

The NTU Seed Fund is set up to bridge early-stage funding gaps for NTU-affiliated spin-offs and startups. By co-investing alongside external investors, the fund supports ventures that demonstrates strong differentiation, viable business models, significant market potential, and robust leadership teams.

[Learn more](#)



### Call for Experts

We invite experienced professionals, founders and ecosystem partners to contribute their expertise to our programmes and initiatives. By connecting industry insights with research and venture creation, we aim to accelerate the translation of ideas into impactful technologies and startups, and strengthen collaboration with international partners.

[Learn more](#)

