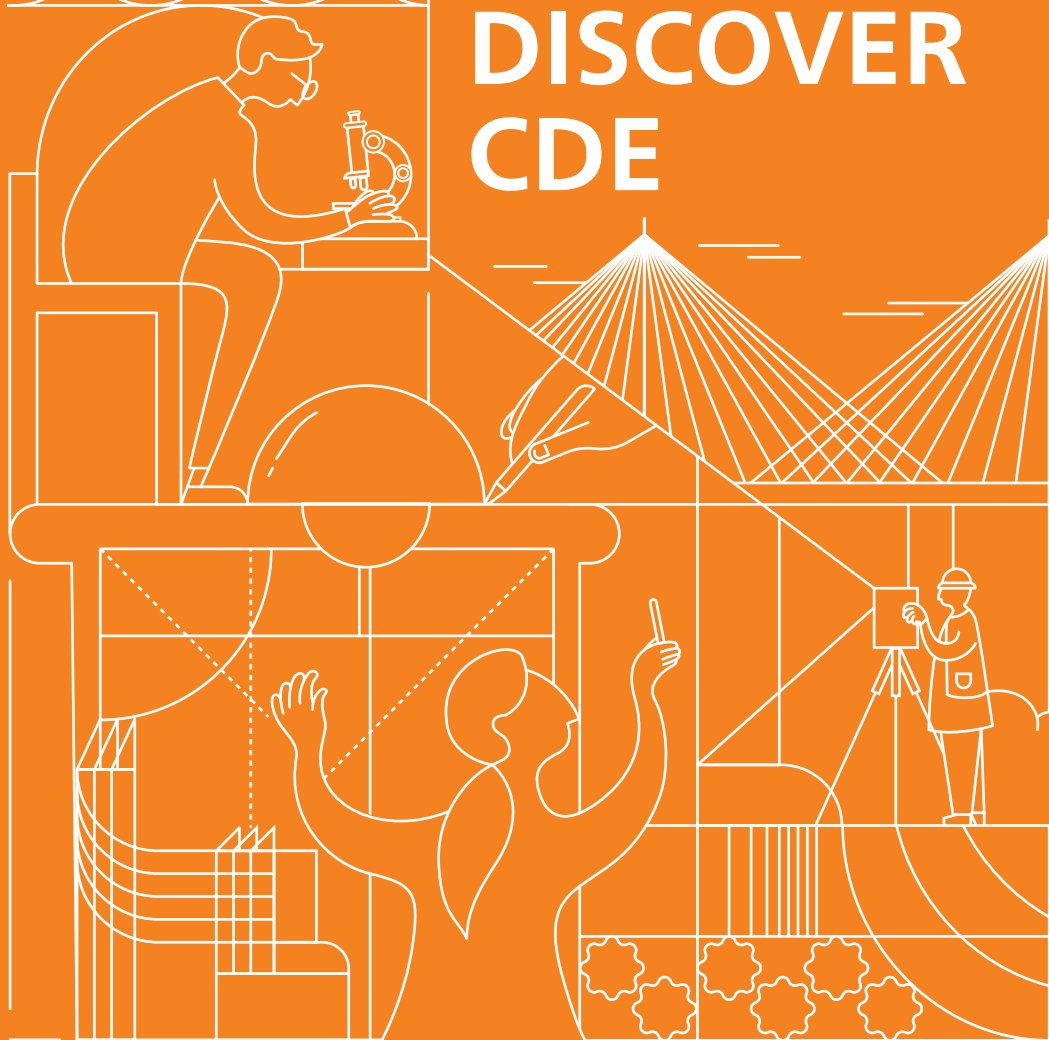




NUS
National University
of Singapore

College of Design
and Engineering

DISCOVER CDE



Contents

04	Welcome to the College of Design and Engineering
06	CDE Among the Top-ranked
07	The CDE Edge
12	Architecture (BA)
13	Biomedical Engineering (BEng)
14	Chemical Engineering (BEng)
15	Civil Engineering (BEng)
16	Computer Engineering (BEng)
17	Electrical Engineering (BEng)
18	Engineering Science (BEng)
19	Environmental Engineering (BEng)
20	Industrial Design (BA)
21	Infrastructure and Project Management (BEng)
22	Industrial and Systems Engineering (BEng)
23	Landscape Architecture (BLA)
24	Materials Science and Engineering (BEng)
25	Mechanical Engineering (BEng)
26	Engineering Scholars Programme (E-Scholars)
26	Design Scholars Programme (D-Scholars)
28	Computing (Design and Engineering) (Second major and minor)
29	Innovation and Design Programme (iDP) (Second major and minor)
30	Systems Engineering (Second major and minor)
31	Sustainable Urban Development (Second major)
32	Cities (Minor)
32	Visual Communication Design (Minor)
34	Specialisations
36	Admission Requirements
38	Frequently Asked Questions
41	Key Activities During the Academic Year



CDE is Globally Recognised

NUS emerged **eighth** in the latest UK-based **Quacquarelli Symonds (QS) World University Rankings 2024**.

NUS is the **highest-ranked Asian university** and the **first from Asia** to place among the top 10 institutions in the world. That's not all — CDE also shines in the subject-specific rankings.

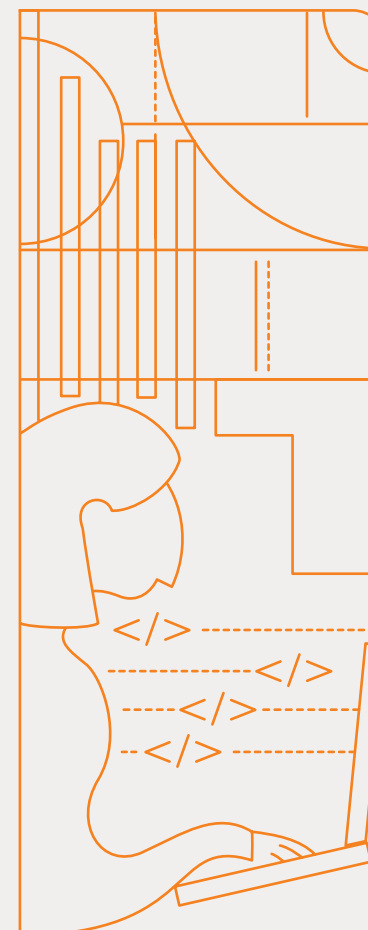
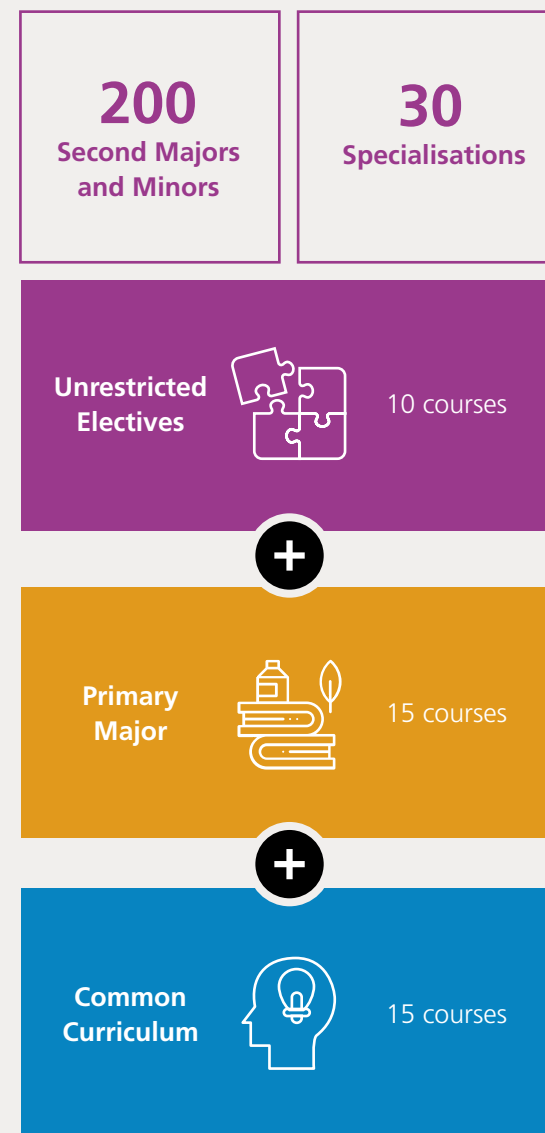
8th
in the world

1st
in asia



The CDE Edge

When you pursue a four-year direct Honours degree at CDE, you gain breadth, depth and flexibility through a combination of the **common curriculum**; a **major** of your choice; and a wide range of **unrestricted electives**.



The CDE Edge

Common Curriculum — 14 pillars to give you a solid foundation so you can maximise opportunities to advance your career, regardless of your discipline. We emphasise instilling lifelong skills in data and digital literacy, systems thinking, design thinking and critical thinking.



Primary Major — 15 courses to provide an in-depth education in your selected discipline among the **14 degree programmes** at CDE. We'll take care of equipping you with relevant competencies from theory to practice — you only need to choose the field in which you will thrive in the future:

Unrestricted Electives — 10 courses to expand your horizons, with over 4000 options across CDE and NUS at your fingertips. We believe in giving you the freedom to personalise your learning to align with your interests. This is your education, the way you always envisioned it.

Direct Admissions

- Architecture (BA)
- Landscape Architecture (BLA)
- Industrial Design (BA)
- Computer Engineering (BEng)

Common Admissions (Engineering)

- Biomedical Engineering (BEng)
- Chemical Engineering (BEng)
- Civil Engineering (BEng)
- Electrical Engineering (BEng)
- Engineering Science (BEng)
- Environmental Engineering (BEng)
- Industrial and Systems Engineering (BEng)
- Infrastructure and Project Management (BEng)
- Materials Science and Engineering (BEng)
- Mechanical Engineering (BEng)

- **Design Your Own Course (DYOC):** Flex your creativity by choosing what you want to learn, how you want to learn it, and who you will learn from (maximum of two courses).
- **Second Major:** Master dual disciplines by pursuing a second major suiting your professional goals. Note: it is a non-honour major with a lower unit requirement than that of your primary major.
- **Minor:** Intrigued by more than one programme? Take a minor (or two!) to explore an additional area beyond your major, within or outside of CDE.
- **Specialisation:** Deepen your knowledge and focus on a particular niche in your chosen field. Combine it with another specialisation or minor to tailor your education to your needs.

- **Research Experience:** Step beyond the four walls of the classroom and learn by doing when you engage in cutting-edge research and innovation projects within CDE.



Artificial Intelligence



Communities & Engagement



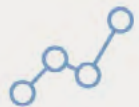
Creating Narratives



Critique & Expression



Cultures & Connections



Data Literacy



Design Thinking



Digital Literacy



Maker Space



Project Management



Singapore Studies



Sustainable Futures



Systems Thinking



Integrated Project

Building Your CDE Degree

What does an education at CDE entail?

An education at CDE will be an exciting, interdisciplinary experience for students where their learning journey takes centre stage. We are equipping students with an adaptable toolbox of skills across disciplines, moving them beyond a knowledge-based education to a mindset-based approach to problem-solving. The CDE common curriculum provides a broad intellectual foundation on which you can continuously upgrade, evolve and re-pivot in a fast-changing world. Our Majors build on top of the common curriculum to allow you to explore your chosen field, and our unrestricted elective space gives you the freedom to customise your educational experience.

What is Build Your Own Degree? How do Unrestricted Electives work?

Each of our undergraduate degrees is a four-year direct honours degree and you need an equivalent of 40 courses to graduate. Your major is your primary area of study, comprising 15 courses. The Common Curriculum accounts for another 15 courses. This leaves 10 courses in the Unrestricted Electives (UE) space that you can use to decide how broad, deep or integrated you want your education to be. You can choose what you want to take from anywhere at NUS. Second majors (10 courses) and minors (5 courses) allow you to broaden your knowledge and skills in a complementary or contrasting area. A specialisation (5 courses) is a focus area within your chosen discipline. Alternatively, you can choose from over 4000 courses available across NUS as electives based on your interest.

Planning Your CDE Journey

What courses do we need to take each year in CDE? Is there a curriculum schedule assigned to students?

Some courses under the Common Curriculum will be pre-allocated to students. Each programme also has a recommended curriculum schedule that students can use to plan the courses they need to take each semester. You may then ballot for the courses you want during the course registration exercise before each semester. The recommended schedule is available on each department's website.

What are the other opportunities available to CDE students?

CDE and the wider NUS community offer a wide range of global opportunities and special programmes to enhance your learning experience such as the NUS Overseas Colleges, Residential Programmes, Student Exchange Programme and Summer/Winter Schools. Those interested in NUS College will be pleased to know it is compatible with all CDE degree programmes. Beyond academics, we have a vibrant College life and offer a wide range of activities from wellness workshops to cooking lessons. With NUS' huge range of clubs and societies there is never a problem with finding your niche!

Key Activities During The Academic Year

June

Orientation

Orientation marks the beginning of the freshmen's journey with an enriching lineup of social engagement activities

July

Start of Sem 1

Freshman Welcome

Welcoming the freshmen to their respective departments and being a part of NUS CDE community

August

Star Awards

Honours the students (individuals or groups) for their passion, talent, contributions & achievements for the faculty and the community at large.

September

Career Fair

Platform for students to engage key employers with exciting career opportunities.

October

Sem 1

Community Day

A day of promoting and building social connectedness and community network

May

End of Sem 2 (After exams)

Vacation 12–13 weeks

January

Start of Sem 2

CDE Day

A day of college student celebration to build a vibrant and cohesive community

Student Life Events

All other student clubs' communications and activities